

# XL4015-5A – Datasheet

## **PRODUCT 5A XL4015** **Adjustable Buck Module**

### PARAMETERS

- Module nature: Non-isolated buck module (BUCK)
- Input voltage: 4-38V (input please try not to exceed 38V)
- Output voltage: 1.25-36V continuously adjustable
- Output current: 0-5A
- Output power: 75W
- Operating temperature: -40 ~ +85 degrees
- Operating frequency: 180KHz
- Conversion efficiency: up to 96%
- Load regulation:  $S(I) \leq 0.8\%$   
(input 24V, output 12V, load from 1 ~ 4.5A change measured)
- Voltage regulation:  $S(u) \leq 0.8\%$   
(output 12V, 4A, the voltage from 18 ~ 32V measured when)
- Power indicator: Yes
- Short-circuit protection: Yes (limit current 8A)
- Over-temperature protection: Yes  
(automatic shutdown after over-temperature output)
- Input reverse polarity protection: None,  
(if necessary, input high current diode in series)
- Installation: 2 3mm screws
- Wiring: welding, V-IN as the input, V-OUT as the output

Product size: 54mm \* 24mm\* 15mm (l x w x h)

Package Weight: :15g/pcs

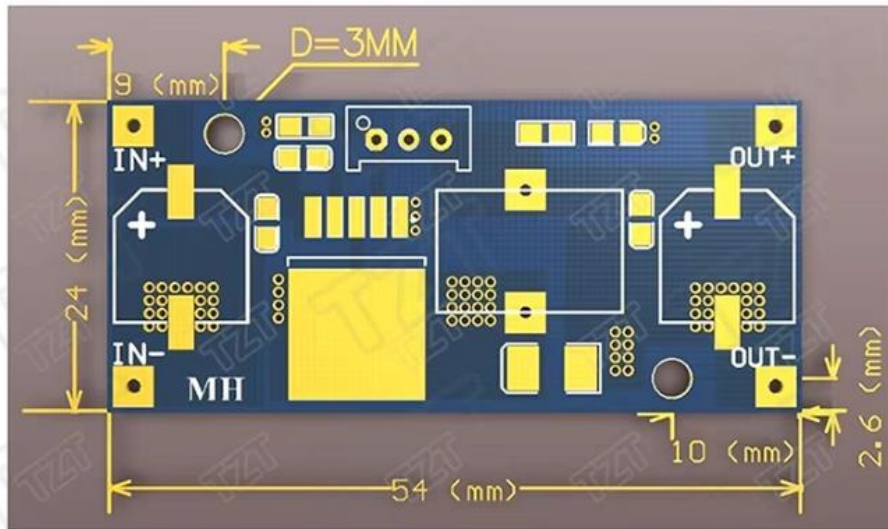
### APPLICATIONS

- This module can be applied to fields in the input voltage is higher than the step-down output voltage, such as batteries, power transformers, DIY adjustable power supply, 24V Car T of the power equipment industry buck, 12V switch 3.3V, 12V switch 5V, 24V switch 5V, 24V switch 12V, 36V 24V turn and so on.

### NOTE

1. When the module output voltage can not be adjusted, the output voltage is always equal to the input voltage. Please adjust the potentiometer counterclockwise 20 laps or more. (Let potentiometer against your chest, counterclockwise turn boost) .
2. Input voltage must be higher than the output voltage of 1.5v or more
3. high current or high power needed to enhance heat dissipation

**Weight : 17.30g**



Clockwise boost  
Counterclockwise step down

